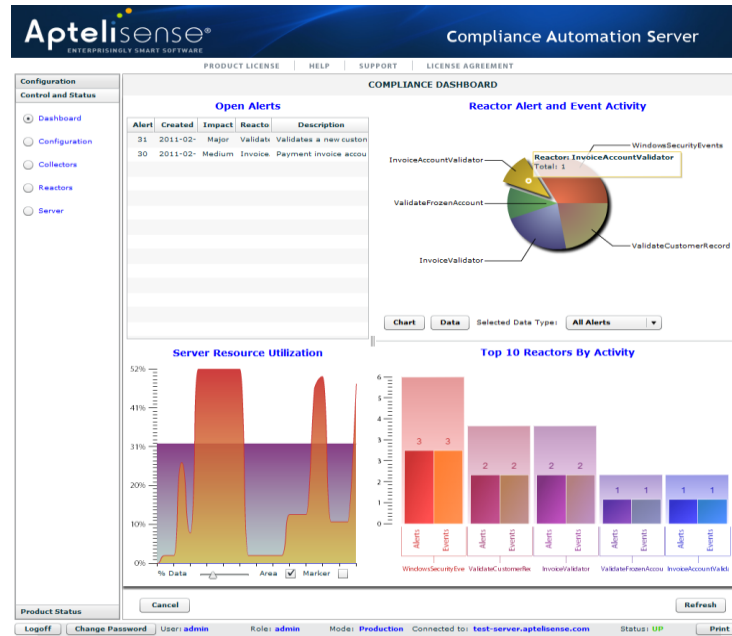


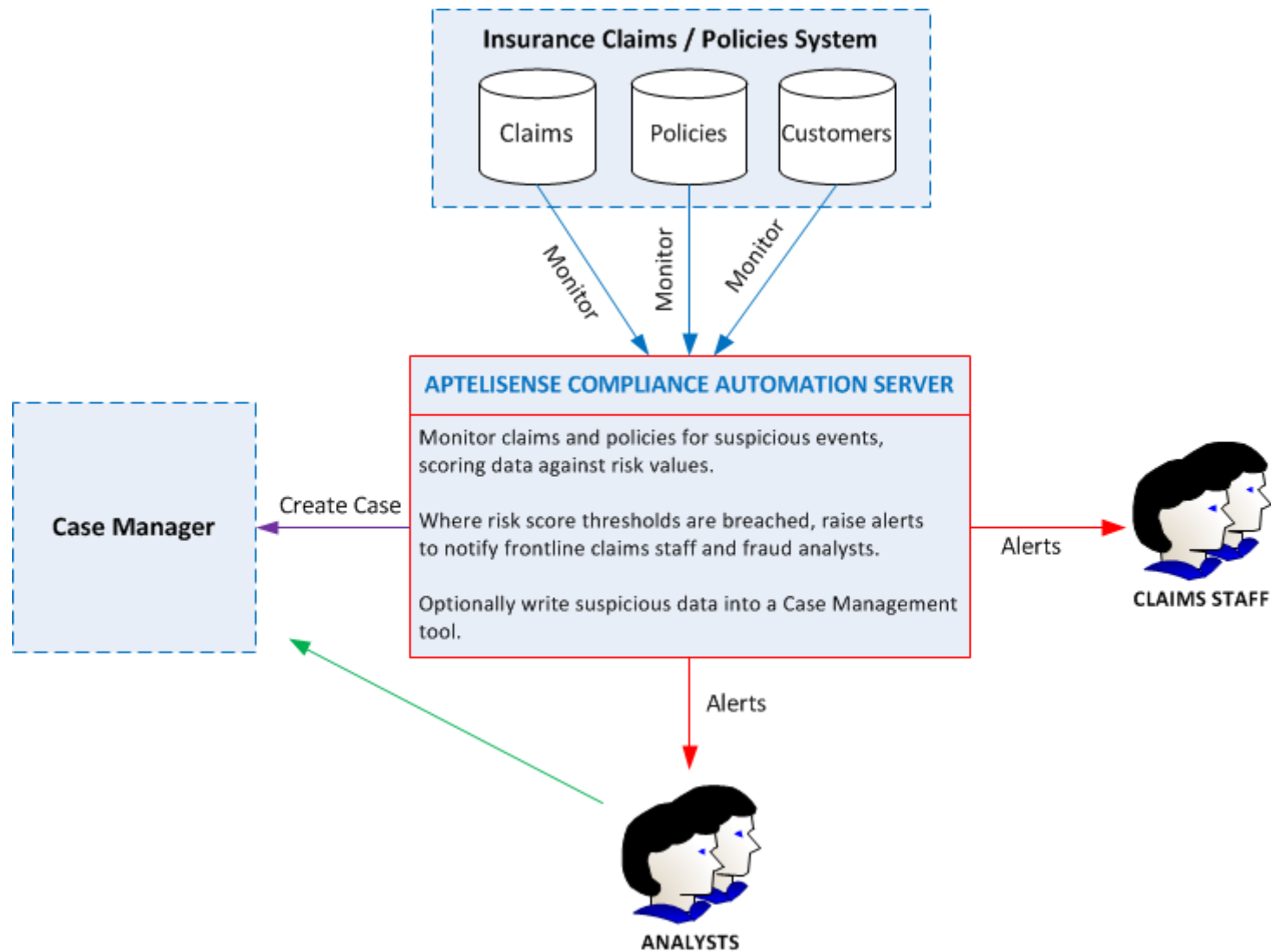
Aptelisense

Expose fraud in live data instantly without adding risk



Compliance Automation Server For Insurance

Using CAS to monitor insurance data



Example Insurance Use Cases

CAS enables your organization to automate monitoring and protection against leading edge fraud and leakage such as:

- Claim raised within days of policy start
- Report of claim delayed by hours or days
- Claim between 10pm and 6am with possible drugs or alcohol involved
- Claim for full policy value under finance

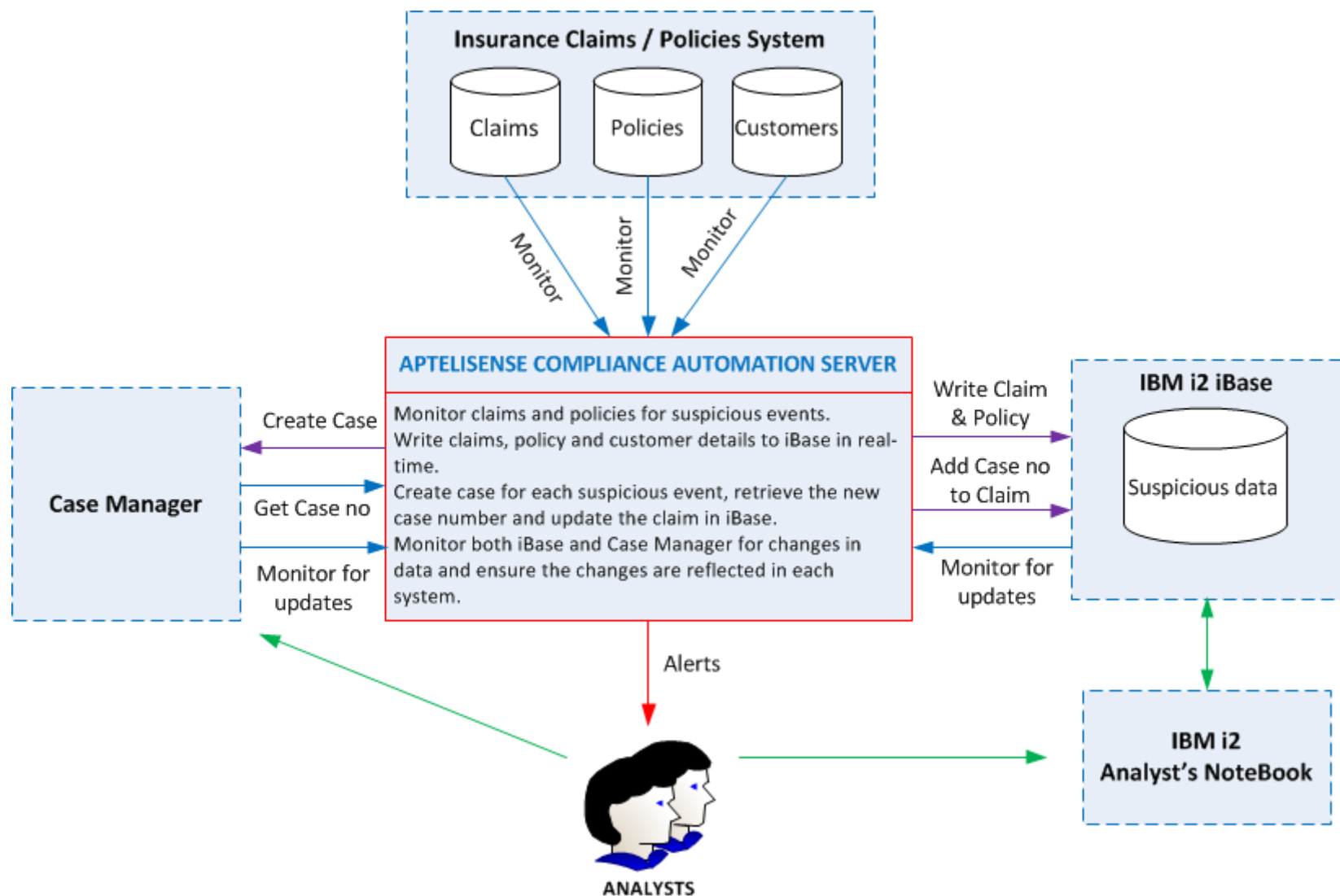
Example Insurance Use Cases

- Vehicle or building insured by multiple policies
- Staff connected to suppliers
- Suppliers connected to staff
- Claimant connected to suppliers
- Claimant connected to multiple policy holders
- Claims from multiple policies against same vehicle
- Use of estimate adjustment override by staff

Example Insurance Use Cases

- Theft not reported to Police
- Claim for vehicle that was towed
- Multiple vehicles sharing same VIN, REG, owner
- Abusive comments or threats made by customer
- Monitoring of supplier cost leakage
- Real-time claims validation with other organizations
- Suspicious personal injury claims

CAS with case management & i2



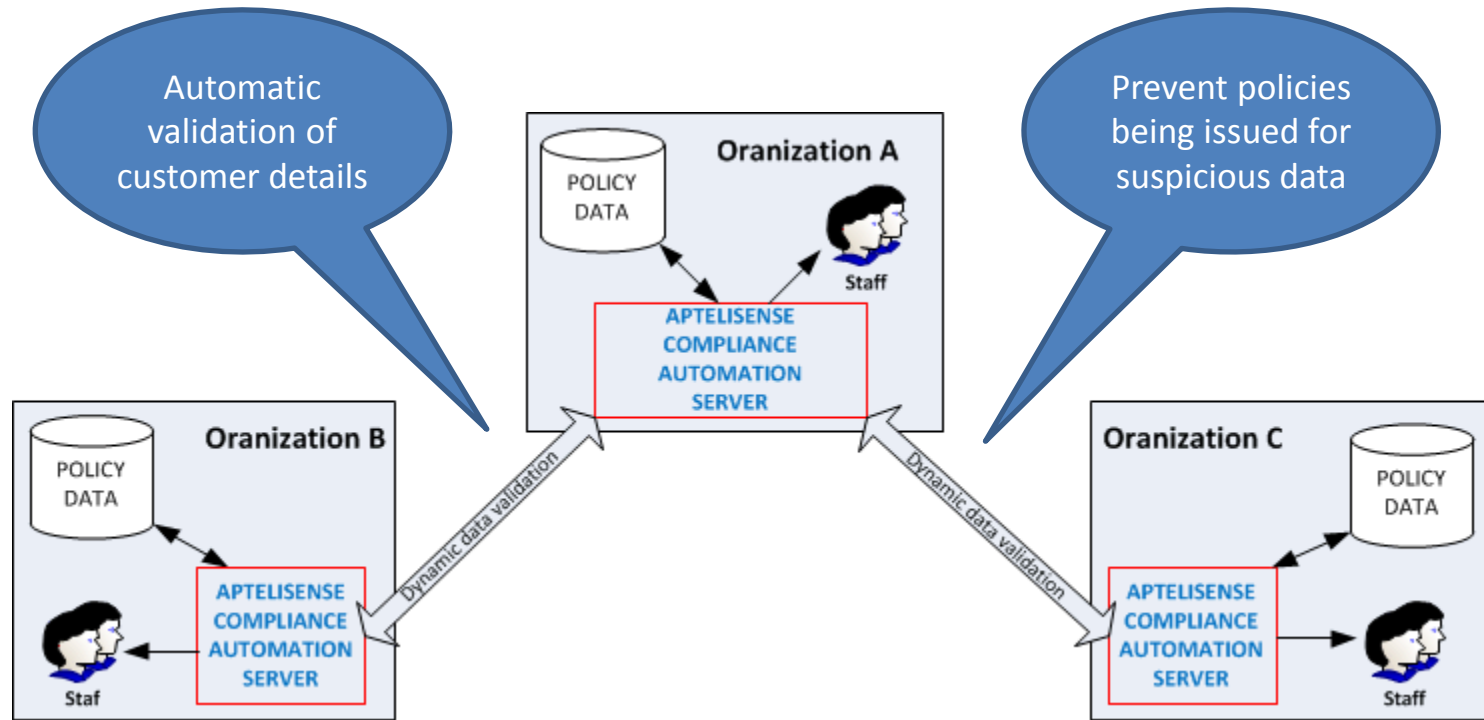
Using CAS with i2

- CAS provides full reactive in-flight data modification and writing
- Allows data to be evaluated and queried against other data source and then written to data source
- Allows i2 products to be inserted into key decision points in customer processes
- Analysts can now be fed suspicious data automatically after CAS has evaluated it
- After Analysts have processed the suspicious data, CAS can reprocess data and update customer data source

Compliance Automation Server

- CAS has been engineered from the ground and its capabilities include:
 - near real-time read-only monitoring of live data sources
 - dynamic data value testing inline or against live data sources
 - alerting on simple or complex user defined rules when attention is required
 - taking automatic action for defined events
 - preventing collusion and unauthorized configuration changes
 - point and click operation with graphical reporting
 - fully encrypted and tamper proof
 - can be switched to fully reactive mode (dynamic data updating)
- CAS is simple to use, does not require programming, requires zero system or application changes, is maintenance free and has a small foot print.

Organization to organization



CAS can be securely networked together using CAS to CAS dynamic queries (one CAS can pass data at any point to another CAS for further testing and receive the result). These queries can be chained through multiple CAS instances.

Alert response and analysis

Aptelisisense
ENTERPRISINGLY SMART SOFTWARE

Compliance Automation Server

PRODUCT LICENSE | HELP | SUPPORT | LICENSE AGREEMENT

Alerts | Network | Support

Alert	Created	Impact	Reactor	Resent	Prior	Since	Action	Receivers	Status	Updated	Modifier	Description	History
23	2011-08-01	Severe	ValidateE	0	0	0	None	steveauth;	Review	2011-08-01	davido	Purchase order details	[davido : 2011-08-02 16:54:39] This is under review
24	2011-08-01	Medium	ValidateE	0	1	1	None	steveauth;	Investi	2011-08-01	davido	An Employee bank ac	[davido : 2011-08-02 16:55:04] This is under investigation - shouldn't happen
25	2011-08-01	Medium	ValidateE	0	1	1	None	steveauth;	Investi	2011-08-01	davido	An employee phone n	[davido : 2011-08-02 16:55:20] This is also under investigation!
26	2011-08-01	Medium	ValidateE	0	0	1	None	steveauth;	Fixed	2011-08-01	davido	Supplier phone numb	[davido : 2011-08-02 16:57:44] Supplier wife works for us and specified the same num
27	2011-08-01	Medium	ValidateE	0	2	0	None	steveauth;	Suspici	2011-08-01	davido	An Employee bank ac	[davido : 2011-08-02 16:56:43] Case closed - suspicious - employee action taken
28	2011-08-01	Medium	ValidateE	0	1	0	None	steveauth;	Suspici	2011-08-01	davido	Supplier bank account	[davido : 2011-08-02 16:56:57] Case closed - suspicious - employee action taken - lin

AlertID: 23 Created: 2011-08-01 22:52:42
Impact: Severe Prior: 0 Since: 0
Receivers: steveauth;davido Updated: 2011-08-01 22:54:40 By: davido
Description: Purchase order details failed to match any defined suppliers
Response:

Change Alert Status:
 Under REVIEW
 Under INVESTIGATION
 Close as FIXED
 Close as UNKNOWN
 Close as SUSPICIOUS

For a Reactor: Type: Alerts by Status Category: All

Mouse Tips: [Color indicators] Network Zoom: [Slider]
Time Scale: [Slider]

Logoff Change Password User: davido Role: analyst Mode: Test Connected to: test-server.aptelisense.com

Automatic fraud detection across alerted data

Alerts require response from Authorizer or Analyst users

Aptelisisense
ENTERPRISINGLY SMART SOFTWARE

Compliance Automation Server

PRODUCT LICENSE | HELP | SUPPORT | LICENSE AGREEMENT

Alerts | Network | Support

Network diagram showing connections between various nodes (users, devices, services). Several nodes are highlighted in red, indicating suspicious events.

Alert: 27
Event: 27
Date: 2011-07-07
Time: 18:19:16
Category: Account
Type: Checking
Detail: 400001
(Double click Node to see associated Events)

Mouse Tips: [Color indicators] Network Zoom: [Slider]
Time Scale: 04Jul11 05Jul11 07Jul11 19Jan12

Logoff Change Password User: davido Role: analyst Mode: Test Connected to: test-server.aptelisense.com Status: UP Print

Suspicious events highlighted in red

Configuration update control

PRODUCT LICENSE | HELP | SUPPORT | LICENSE AGREEMENT

COMPLIANCE SERVER POLICY

Network | Date & Time | License | Proxy | Accounts | Authorization | Alerts

Change Authorization Policy Configuration Panel

Order	Userid	Role	Description
2	madge	authorizer	Authorizer
1	steveh	authorizer	Authorizer
	barryw	authorizer	authorizer.

Minimum number of authorizers: Refresh

Minutes to wait before escalating an authorization:

Which of the following configuration changes require authorization (when running in Production mode):

- User changes: Add Delete Update

- All other changes: Add Delete Update Save

Start Stop Restart Pause Shutdown

NOTE: Authorization requests are sent as a type of Alert using the server configuration values on the Alerts panel.

Can configuration objects be updated while they are in use by other objects:

Yes

NOTE: The default is no. Setting this to 'yes' will allow you to modify (update) objects that are in use but will change the status of the object to non-live. The configuration must be saved to push it back as live. If you require to delete an object which is in use, you will have to remove the dependency first.

Advanced authorisation control over any configuration change

Server Message

Request to stop Collector:
'WindowsSecurityEvents' is currently waiting on authorization ticket: 10

OK

Changes can require authorisation if configured

You can authorise or reject any change before they go live

Ticket: 10 Created: 2011-03-15 02:59:06 Start: End:

Type: EARIP Status: In progress

Requester: steve Updated:

Reason: user: steve is attempting to Stop a Collector object named: WindowsSecurityEvents

Response: There is no change control for this - rejected!

Cancel Authorize Reject Update Selection Criteria: Open Refresh

Simple and intuitive to use

Open Alerts

Alert	Created	Impact	Reactor	Description
23	2011-08-	Medium	ValidateEmployee	An employee phone number matched
24	2011-08-	Medium	ValidateEmployee	An Employee bank account matched a
23	2011-08-	Severe	ValidateEmployee	Purchase order details failed to match

Reactor Alert and Event Activity

Server Resource Utilization

Top 10 Reactors By Activity

Reactor	Alerts	Events
ValidateEmployee	3	3
ValidateSupplier	2	2
ValidatePurchaseOrder	1	1
ValidateInvoice	0	0
SecurityAccountChanger	0	0

Simple and clear reporting with easy to understand alerting in real-time.

Alerts Associated with Reactor: ValidateEmployee

Alert	Created	Impact	Resent	Prior	Since	Action	Receivers	Status	Updated	Modifier	Description	Response
24	2011-08-	Medium	0	0	2	None	steveauth;	Investig	2011-08-	davido	An Employee bank ac	
25	2011-08-	Medium	0	1	1	None	steveauth;	Investig	2011-08-	davido	An employee phone r	

Click to cancel this panel

Display only open alerts?

Every field has optional mouse help tips

Compliance Automation Server

Expose fraud in live data instantly without adding risk

Installs in minutes, configured
in hours, productive in days

Aptelisense.com

sales.enquiry@aptelisense.com