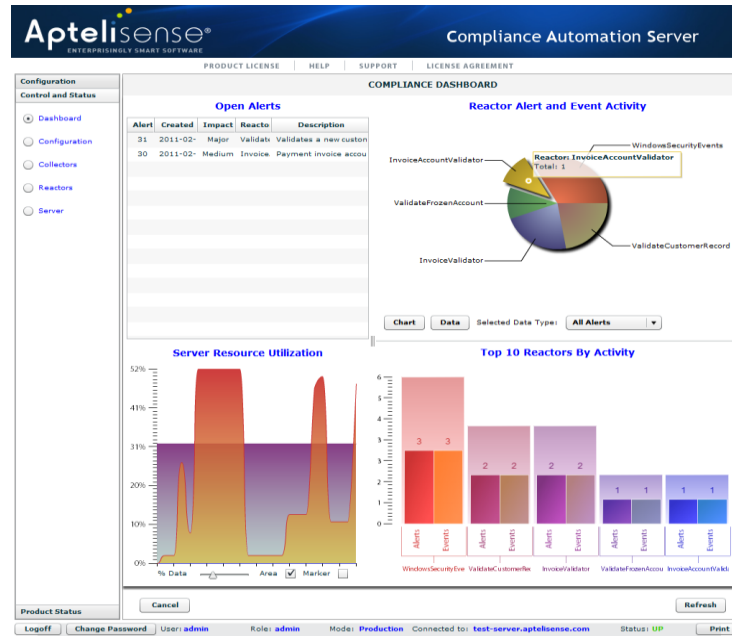


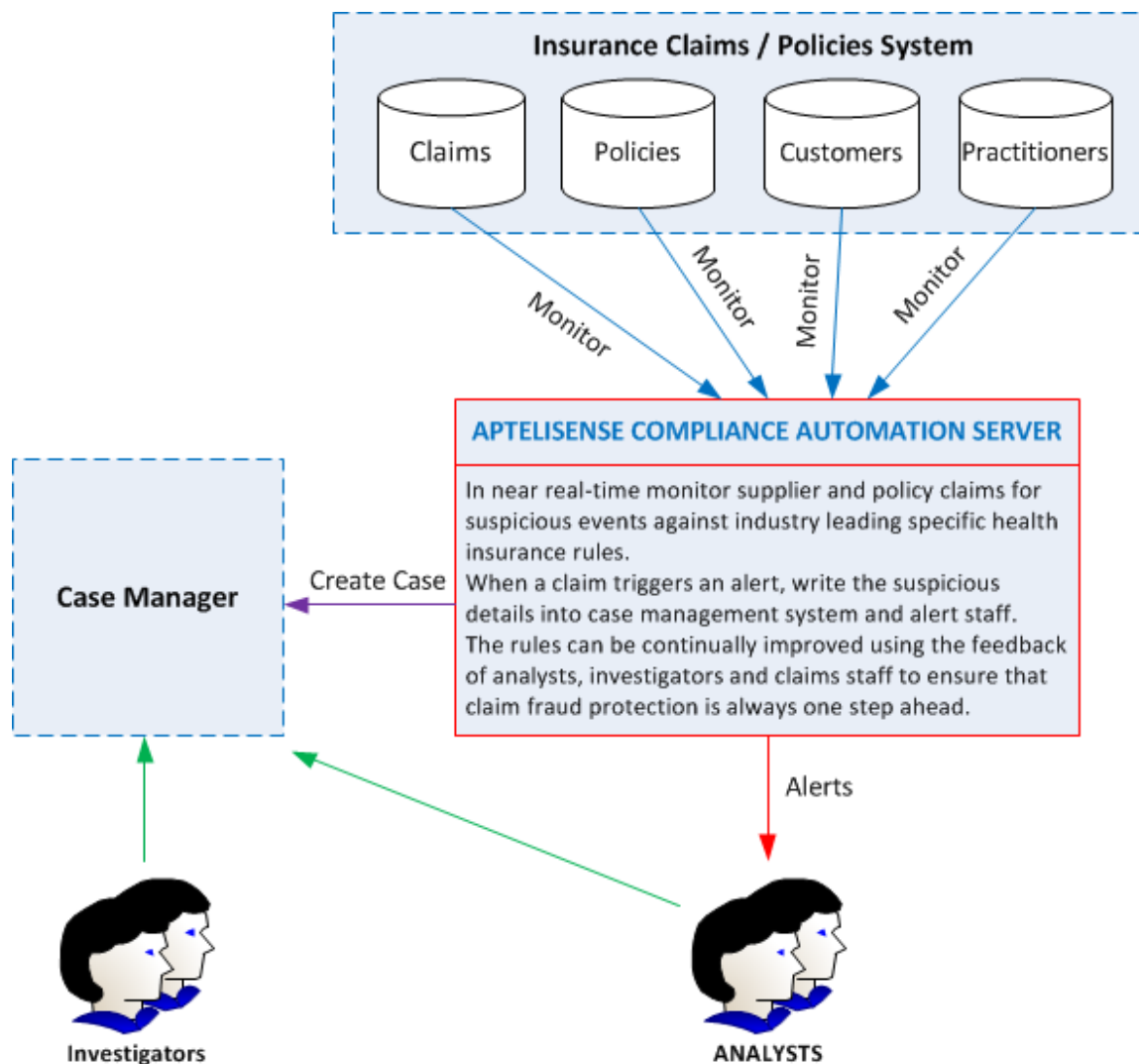
Aptelisense

Expose fraud in live data instantly without adding risk



Compliance Automation Server For Health Insurers

Using CAS to monitor insurance data



Example Insurance Use Cases

CAS enables your organization to automate monitoring and protection against leading edge fraud and leakage such as:

- Unusual number of procedures performed by practitioner over a period of time
- Check of claimant or practitioner against internal suspicious list or external agency
- Detection of claimant(s) connected to practitioner
- Practitioner payment leakage or escalation

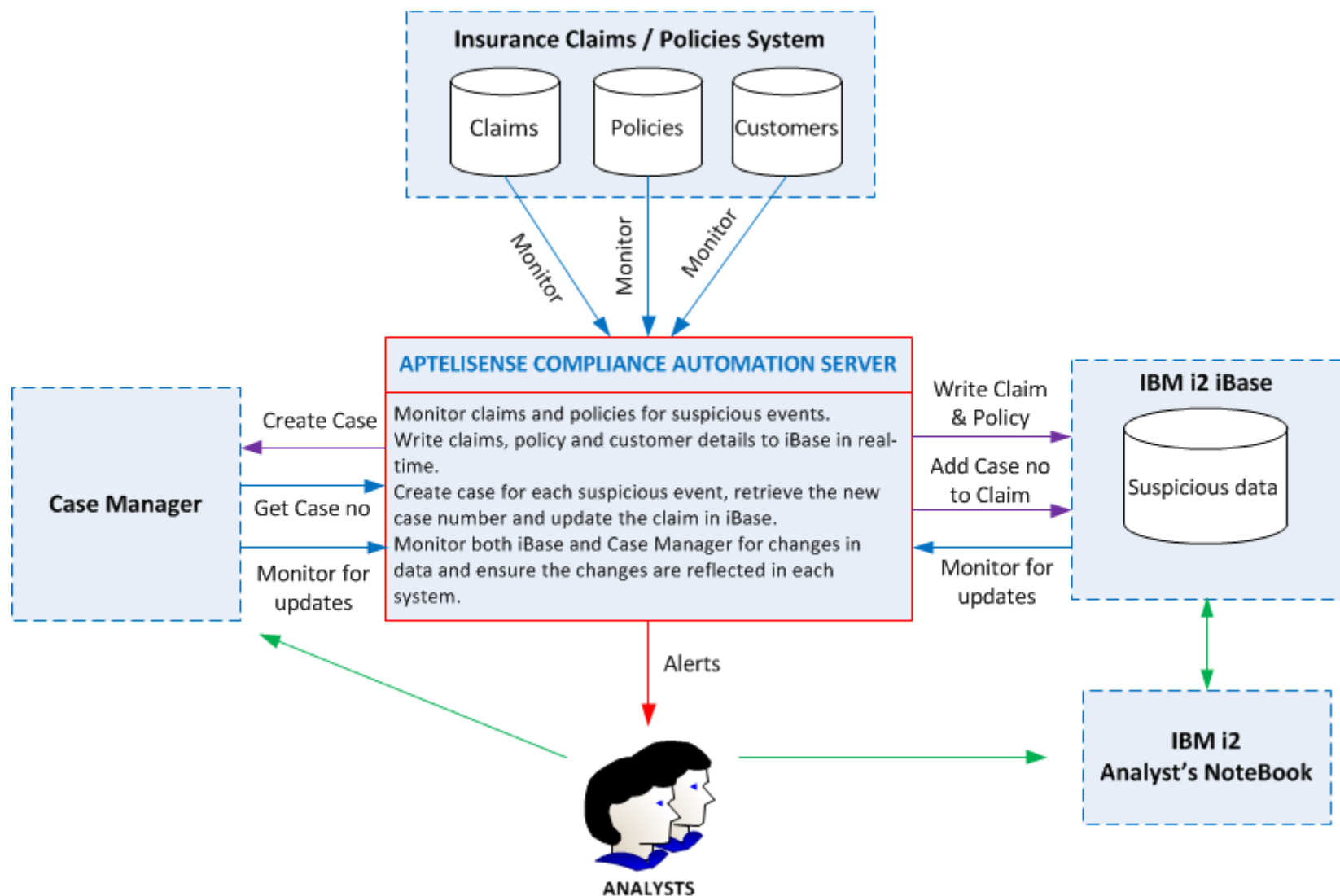
Example Insurance Use Cases

- Physician's geographic region different to claimant
- Procedures performed on weekends or public holidays
- Clustering of small payments (under the radar)
- Automatic balancing of claim transaction totals
- Automated reporting / monitoring of top practitioners
- Claim raised within days of policy start
- Report of claim delayed by days or weeks
- Monitor for abusive or threatening customers

Example Insurance Use Cases

- Verification of practitioner membership status
- Claimant with multiple disability policies
- No communication made to emergency services
- Claimant changes attending physicians frequently
- Physician's specialty not consistent with diagnosis
- Prescriptions are cut or have been altered
- Real-time data validation with third parties

CAS with case management & i2



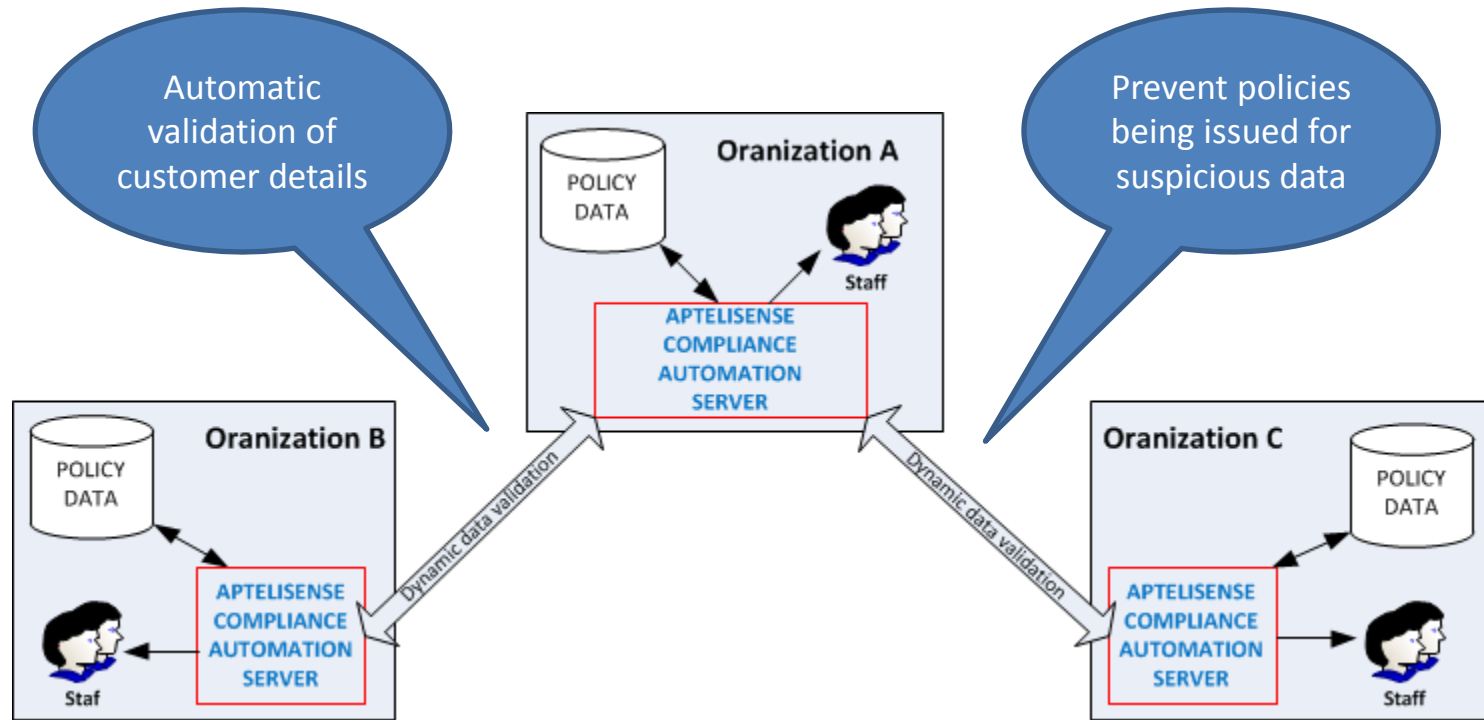
Using CAS with i2

- CAS provides full reactive in-flight data modification and writing
- Allows data to be evaluated and queried against other data source and then written to data source
- Allows i2 products to be inserted into key decision points in customer processes
- Analysts can now be fed suspicious data automatically after CAS has evaluated it
- After Analysts have processed the suspicious data, CAS can reprocess data and update customer data source

Compliance Automation Server

- CAS has been engineered from the ground and its capabilities include:
 - near real-time read-only monitoring of live data sources
 - dynamic data value testing inline or against live data sources
 - alerting on simple or complex user defined rules when attention is required
 - taking automatic action for defined events
 - preventing collusion and unauthorized configuration changes
 - point and click operation with graphical reporting
 - fully encrypted and tamper proof
 - can be switched to fully reactive mode (dynamic data updating)
- CAS is simple to use, does not require programming, requires zero changes to you systems or applications and has a small foot print.

Organization to organization



CAS can be securely networked together using CAS to CAS dynamic queries (one CAS can pass data at any point to another CAS for further testing and receive the result). These queries can be chained through multiple CAS instances.

Alert response and analysis

Aptelisisense
ENTERPRISINGLY SMART SOFTWARE

Compliance Automation Server

PRODUCT LICENSE | HELP | SUPPORT | LICENSE AGREEMENT

Alerts | Network | Support

| Alert | Created | Impact | Reactor | Resent | Prior | Since | Action | Receivers | Status | Updated | Modifier | Description | History |
|-------|------------|--------|-----------|--------|-------|-------|--------|------------|---------|------------|----------|------------------------|---|
| 23 | 2011-08-01 | Severe | ValidateE | 0 | 0 | 0 | None | steveauth; | Review | 2011-08-01 | davido | Purchase order details | [davido : 2011-08-02 16:54:39] This is under review |
| 24 | 2011-08-01 | Medium | ValidateE | 0 | 1 | 1 | None | steveauth; | Investi | 2011-08-01 | davido | An Employee bank ac | [davido : 2011-08-02 16:55:04] This is under investigation - shouldn't happen |
| 25 | 2011-08-01 | Medium | ValidateE | 0 | 1 | 1 | None | steveauth; | Investi | 2011-08-01 | davido | An employee phone n | [davido : 2011-08-02 16:55:20] This is also under investigation! |
| 26 | 2011-08-01 | Medium | ValidateE | 0 | 0 | 1 | None | steveauth; | Fixed | 2011-08-01 | davido | Supplier phone numb | [davido : 2011-08-02 16:57:44] Supplier wife works for us and specified the same num |
| 27 | 2011-08-01 | Medium | ValidateE | 0 | 2 | 0 | None | steveauth; | Suspici | 2011-08-01 | davido | An Employee bank ac | [davido : 2011-08-02 16:56:43] Case closed - suspicious - employee action taken |
| 28 | 2011-08-01 | Medium | ValidateE | 0 | 1 | 0 | None | steveauth; | Suspici | 2011-08-01 | davido | Supplier bank account | [davido : 2011-08-02 16:56:57] Case closed - suspicious - employee action taken - lin |

AlertID: 23 Created: 2011-08-01 22:52:42
Impact: Severe Prior: 0 Since: 0
Receivers: steveauth;davido Updated: 2011-08-01 22:54:40 By: davido
Description: Purchase order details failed to match any defined suppliers
Response:

Change Alert Status:
 Under REVIEW
 Under INVESTIGATION
 Close as FIXED
 Close as UNKNOWN
 Close as SUSPICIOUS

For a Reactor: Type: Alerts by Status Category: All

Mouse Tips: [Color indicators] Network Zoom: [Slider]
Time Scale: [Slider]

Logoff Change Password User: davido Role: analyst Mode: Test Connected to: test-server.aptelisense.com

Automatic fraud detection across alerted data

Alerts require response from Authorizer or Analyst users

Aptelisisense
ENTERPRISINGLY SMART SOFTWARE

Compliance Automation Server

PRODUCT LICENSE | HELP | SUPPORT | LICENSE AGREEMENT

Alerts | Network | Support

Network diagram showing connections between various nodes (users, devices, systems). Several nodes are highlighted in red, indicating suspicious events.

Alert Event: 27
Date: 2011-07-07
Time: 18:19:16
Category: Account
Type: Checking
Detail: 400001
(Double click Node to see associated Events)

Mouse Tips: [Color indicators] Network Zoom: [Slider]
Time Scale: 04Jul11 05Jul11 07Jul11 19Jan12

Logoff Change Password User: davido Role: analyst Mode: Test Connected to: test-server.aptelisense.com Status: UP Print

Suspicious events highlighted in red

Configuration update control

PRODUCT LICENSE | HELP | SUPPORT | LICENSE AGREEMENT

COMPLIANCE SERVER POLICY

Network | Date & Time | License | Proxy | Accounts | Authorization | Alerts

Change Authorization Policy Configuration Panel

| Order | Userid | Role | Description |
|-------|--------|------------|-------------|
| 2 | madge | authorizer | Authorizer |
| 1 | steveh | authorizer | Authorizer |
| | barryw | authorizer | authorizer. |

Minimum number of authorizers: Refresh

Minutes to wait before escalating an authorization:

Which of the following configuration changes require authorization (when running in Production mode):

- User changes: Add Delete Update

- All other changes: Add Delete Update Save

Start Stop Restart Pause Shutdown

NOTE: Authorization requests are sent as a type of Alert using the server configuration values on the Alerts panel.

Can configuration objects be updated while they are in use by other objects:

Yes

NOTE: The default is no. Setting this to 'yes' will allow you to modify (update) objects that are in use but will change the status of the object to non-live. The configuration must be saved to push it back as live. If you require to delete an object which is in use, you will have to remove the dependency first.

Advanced authorisation control over any configuration change

Server Message

Request to stop Collector:
'WindowsSecurityEvents' is currently waiting on authorization ticket: 10

OK

Changes can require authorisation if configured

You can authorise or reject any change before they go live

Ticket: 10 Created: 2011-03-15 02:59:06 Start: End:

Type: EARIP Status: In progress

Requester: steve Updated:

Reason: user: steve is attempting to Stop a Collector object named: WindowsSecurityEvents

Response: There is no change control for this - rejected!

Cancel Authorize Reject Update Selection Criteria: Open Refresh

Simple and intuitive to use

Open Alerts

| Alert | Created | Impact | Reactor | Description |
|-------|----------|--------|------------------|--|
| 23 | 2011-08- | Medium | ValidateEmployee | An employee phone number matched |
| 24 | 2011-08- | Medium | ValidateEmployee | An Employee bank account matched a |
| 23 | 2011-08- | Severe | ValidateEmployee | Purchase order details failed to match |

Reactor Alert and Event Activity

ValidateSupplier, ValidatePurchaseOrder, ValidateEmployee

Server Resource Utilization

Top 10 Reactors By Activity

| Reactor | Alerts | Events |
|------------------------|--------|--------|
| ValidateEmployee | 3 | 3 |
| ValidateSupplier | 2 | 2 |
| ValidatePurchaseOrder | 1 | 1 |
| ValidateInvoice | 0 | 0 |
| SecurityAccountChanger | 0 | 0 |

PRODUCT STATUS: User: admin, Role: admin, Mode: Test, Connected to: test-server.aptelisense.com, Status: UP

Simple and clear reporting with easy to understand alerting in real-time.

Alerts Associated with Reactor: ValidateEmployee

| Alert | Created | Impact | Resent | Prior | Since | Action | Receivers | Status | Updated | Modifier | Description | Response |
|-------|----------|--------|--------|-------|-------|--------|------------|----------|----------|----------|---------------------|----------|
| 24 | 2011-08- | Medium | 0 | 0 | 2 | None | steveauth; | Investig | 2011-08- | davido | An Employee bank ac | |
| 25 | 2011-08- | Medium | 0 | 1 | 1 | None | steveauth; | Investig | 2011-08- | davido | An employee phone r | |

Click to cancel this panel

Every field has optional mouse help tips

Compliance Automation Server

Expose fraud in live data instantly without adding risk

Installs in minutes, configured
in hours, productive in days

Aptelisense.com